

Anti-CD24 hlgG1 Antibody(LM-109)

Product information

GM-82520AB-10	10 µg
GM-82520AB-100	100 µg
GM-82520AB-1000	1 mg

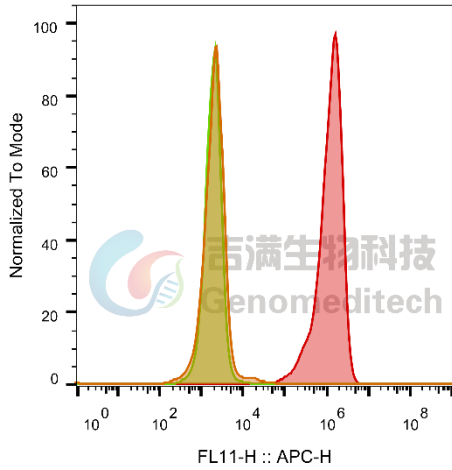
Antibody Information

Species Reactivity	Human;
Clone	LM-109
Source/Isotype	Monoclonal human IgG1, κ
Application	Flow cytometry
Specificity	Detects CD24
Gene	CD24
Other Names	CD24A
Gene ID	100133941(human)
Background	The CD24 antibody is used to study the CD24 molecule on the cell membrane. CD24 is a glycoprotein that is widely expressed in many cell types, including white blood cells, nerve cells, and tumor cells. CD24 plays important roles in cell adhesion, cell signaling, and immune response. By using the CD24 antibody, researchers can detect the expression levels, localization, and interactions of CD24, revealing its functions in cell biology and disease processes. These studies are of significant importance in uncovering cellular molecular mechanisms, disease diagnosis, and treatment development.
Storage	Store at 2-8°C short term (1-2 weeks).Store at ≤ -20°C long term. Avoid repeated freeze-thaw.
Formulation	Phosphate-buffered solution, pH 7.2.
Endotoxin	< 1 EU/mg, determined by LAL gel clotting assay

Data Examples

Flow cytometry

H_CD24 CHO-K1 Cell Line (Catalog # GM-C03862) was stained with Anti-CD24 hlgG1 Antibody(LM-109) (Catalog # GM-82520AB) or isotype control antibody, followed by anti-Human IgG APC-conjugated Secondary Antibody.



SampleID	Geometric Mean : FL11-H
CHO-K1 anti_CD24+APC-2nd Ab	2000
CHO-K1 H_CD24 H_IgG+APC-2nd Ab	1884
CHO-K1 H_CD24 anti_CD24+APC-2nd Ab	1.14E6

Fig. FACS